

# Administration Staff

Mr Mark Rickard – Executive Principal

Mrs Sharie Callum- Director of Junior Secondary

Ms Anna Aldridge– Director of School Operations

Mrs Sarah Douglas – Director of Senior Secondary

Mr Brendon Wolski – Director of Studies

Respect

Integrity

Diligence

Compassion



# Monday 22 January 2018

## First Day of High School

Commence in the Sports Hall at 9:00am

Sit in your Care Class

(Alphabetised lists will be around the Sports Hall area)

Parents are welcome to attend this Assembly

Respect

Integrity

Diligence

Compassion



# What to wear

## Full Dress Uniform

### Boys

Red Polo Shirt

Dark Grey dress shorts

White ankle length socks

Totally black enclosed leather lace up shoes

### Girls

Red Polo Shirt

Grey pleated check knee-length skirt

White ankle length socks

Totally black enclosed leather lace up shoes

Respect

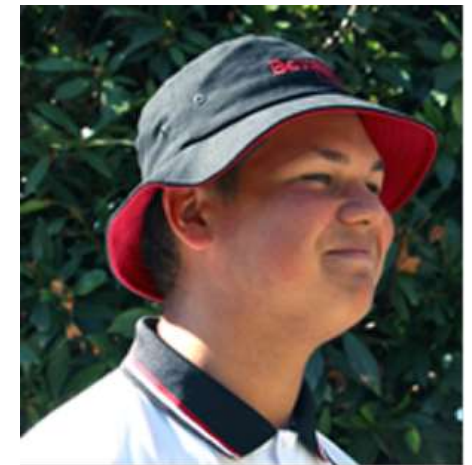
Integrity

Diligence

Compassion

# What to wear

Example of Full Dress Uniform and Sport Uniform



Respect

Integrity

Diligence

Compassion

manypathways *No limits*  
**Benowa**  
STATE HIGH SCHOOL



# What to bring

Notebook, Pen and Lunch

Please note you will receive your book pack and textbooks on the day.

Your book pack includes:

A4 notebooks, Blue & Black Pens, Highlighters, Diary, 8Gb USB, Calculator.

You will also receive your textbooks.

Respect

Integrity

Diligence

Compassion



# Benowa SHS is a BYOx school (Bring your own device)

- **Operation System** - Windows 7 or higher
- **CPU** - Intel i3 4th Generation and/or AMD A8-7050 or higher
- **RAM** - 4GB or higher
- **Hard drive Space** - 128GB or higher
- **Wireless** - 802.11n or higher
- **Battery** - 6 hours or higher
- **Screen** - 10" or higher
- **Features** - 2 x USB ports, Head phone port, microphone port, webcam & pen (desirable)

Respect

Integrity

Diligence

Compassion

# What will I be doing Day 1

Meet at the Sports Hall (Sit in Care Class)

Welcome Assembly

School Tour (orienteering activity)

The Inter-Year Program

Timetables

Stationery Packs

Textbooks

Respect

Integrity

Diligence

Compassion



# What are my regular classes

## Core Learning

English x 8 lessons

Maths x 8 lessons

Science x 4 lessons

History/Geography x 4 lessons

Health and Physical Education x 4 lessons

Language x 4 lessons

## Elective Rotation

The Arts, Business, Food Studies, Industrial Design (one per term x 4 lessons)

\* Note that Excellence Program timetables will be reflect Excellence areas

Respect

Integrity

Diligence

Compassion



# Bell Schedule

Period	Time	Wednesday (Semester 1)
Care	8:45	No Care
1	8:55-9:30	8:45-9:20
2	9:30-10.05	9:20-9:55
3	10:05-10.40	9:55-10:30
4	11:20-11:55	11:00-11:35
5	11:55-12:30	11:35-12.10
6	12:30-1:05	Lunch/Sport
7	1:35-2.10	Sport
8	2:10-2:45	Sport

Respect

Integrity

Diligence

Compassion

# What about the first few weeks?

- The Inter-Year Program
- Responsible Thinking Room presentation
- Support Services presentation
- Goal Setting and Personal Improvement Plans
- BYOx onboarding
- Progressive Achievement Testing – Reading, Maths, Science
- Appointments with Coach Nancy

Respect

Integrity

Diligence

Compassion

# Important Term 1 Dates

## **Swimming Carnival**

Thursday 1 February

Griffith University

Year 7 students transported to and from venue

## **Year 7 Parent Afternoon**

**Wednesday 30 March**

3-4pm in Performing Arts Theatre

Respect

Integrity

Diligence

Compassion



# How can parents help



## Q Parent

- Signing up for Q Parent allows you to monitor attendance and academic results.



## Appointments

- Schedule appointments outside of school hours. A late arrival or early departure is a half-day absence.



## Explain Absences

- Send a note, ring or text to explain each individual absence

Respect

Integrity

Diligence

Compassion

# Excellence Program Meetings

Academic French Immersion W107

Academic STEM – W103

Academic Waldorf – W207

Dance Excellence - K5

Music Excellence – K5

Sports Excellence – K3

Academic Merit – Sports Hall

Respect

Integrity

Diligence

Compassion

